

Review process for International Conference on Emerging Trends in Mechanical Engineering (ICETME-2026)

The conference employs a double-blind peer review system to uphold scientific quality and impartiality. Manuscript submissions will be evaluated solely on merit, without consideration of author identity, institutional affiliation, or prior accomplishments. A double-blind peer review policy ensures unbiased and fair evaluation by keeping both author and reviewer identities anonymous throughout the process, addressing publisher demands for transparency and integrity.

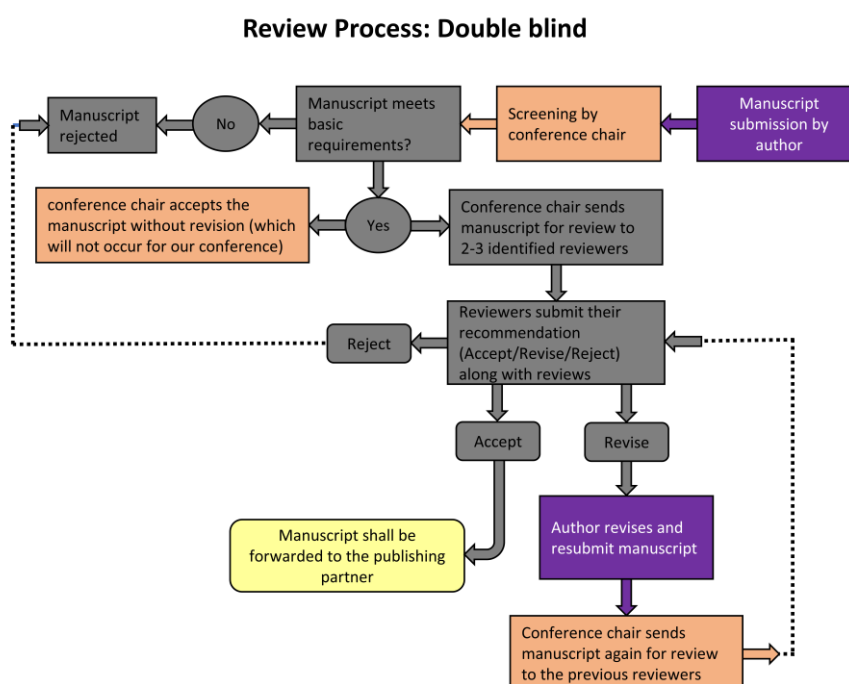
Review Process:

- The conference chair / editor will handle manuscripts.
- The conference chair / editor will assign anonymized manuscripts to qualified expert reviewers with no conflicts of interest.
- Each manuscript will be assessed by at least two independent reviewers.
- Reviewers submit anonymous evaluations and recommendations; feedback returned to authors will be constructive and professional, supporting editorial decisions.
- The final decision regarding acceptance, revision, or rejection rests with the editorial committee/program chair, based solely on reviewer feedback and conference standards.
- All authors will be notified of decisions simultaneously, maintaining anonymity throughout the process.
- Accepted papers will be published if they meet conference and publisher criteria, with ethical compliance assured throughout.
- In addition to the review process conducted by the conference committee, there may be a separate review process for the journals or conference proceedings as per their requirements.

Best Practices & Ethics

- Unbiased consideration for all papers, regardless of author background.
- Adherence to publisher-mandated ethical standards and quality criteria.
- Use of robust peer review management systems to maintain anonymity and streamline workflow.

Flowchart for Peer Review Process:



1. Manuscript preparation and author guidelines

Outlined below are the official guidelines for preparing and submitting a manuscript to ICETME2026. Not adhering to any of these guidelines may lead to the manuscript being rejected without review

Manuscript template: Papers must be submitted electronically in the specified Microsoft Word format. The manuscript should not exceed eight pages, which includes text, figures, and tables, with an additional allowance of two pages for references. Modifications to the templates are prohibited. If the manuscript format is not adhered to, including any changes to margins or vertical spacing, it will be automatically rejected. The conference chairs reserve the right to request the original Word document to evaluate any potential non-compliance with submission requirements.

Author Information: To avoid conflicts of interest among authors, reviewers, and conference chairs, a comprehensive list of co-authors must be included during submission of full paper. Once the submission is made, the author list is final and cannot be altered. Anyone who has been involved with the manuscript, either directly or indirectly, during the decision-making process, should not be added as a co-author after initial submission.

Disclosure and acknowledgment of data use: Authors must disclose the source, license, and, if applicable, the ethical application number of any public or private data used in preparing the paper. The publication should also include citation information and/or acknowledgments as required by the publishers of any public or private data used in the article's development. If necessary, the data use declaration and acknowledgment should be anonymized for evaluation. This declaration can be included anywhere in the main text, such as when detailing the experimental setup.

Participation at conferences: An author who has registered for the conference is required to present all accepted papers, whether online or offline. If authors fail to present their work in either offline or online mode, the program committee reserves the right to remove an approved paper from publication in journal/proceedings.

2. Submission & Review Process:

The Microsoft Conference Management Tool (CMT) will be utilized for all abstract and paper submissions [[click here for how to submit](#)]. Typically, submissions to ICETME2026 will be reviewed by two to three reviewers. Below are some key components to help authors ensure a smooth submission and review process.

Submission to Track and Themes: Each paper must be submitted using the Conference Track and Secondary, with areas selected from the CMT system under that Track. Additional secondary areas can be chosen as needed. These topics will be used by the CMT system to suggest Area Chair assignments and reviewers. Generally, more detailed topic selections will lead to better reviewers.

BioRxiv/arXiv: Due to the increasing trend of posting technical reports and arXiv papers (or other types of preprints), authors of a submitted paper may sometimes be known to a reviewer. Reviewers are strongly discouraged from searching arXiv for submissions they are assigned to review. Even if they come across this information, they are advised not to use it in their evaluation.

Duplicate Submissions: Submissions for ICETME2026 must be original and cannot be published or under consideration for publication elsewhere. By submitting a full paper to ICETME 2026, authors confirm that their work has not been published before, has not been accepted for publication, and is not being considered for publication in a substantially similar form in any peer-reviewed journal, conference, or workshop. If any of these conditions are violated, the submission will be automatically desk rejected.

Plagiarism: Plagiarism involves using another person's words or research without proper acknowledgment or citation, is a grave violation. Self-plagiarism, such as reusing figures and text from the authors' previous works, is also forbidden. Reviewers and chairs are responsible for identifying such plagiarism and reporting it to the ICETME 2026 Organizing Committee for further examination. The similarity index of all submitted papers will be assessed using Turnitin plagiarism detection software, which will also provide an AI plagiarism score. The submission of manuscripts to ICETME 2026 that have been written using large language models (LLMs), such as ChatGPT, Gemini, Perplexity, Copilot, and similar tools, is strictly prohibited.

Conflicts of interest: Authors must provide a complete list of co-authors when submitting their work to address these conflicts. No changes in author and co-authors name are permitted after submission of manuscript. Additionally, a statement of conflicts of interest should be included in the manuscript prior to the references section.

Note: All submitted papers will undergo a thorough peer-review process conducted by the Conference Technical Committee. Based on the quality, originality, and scope of the research work, the committee will make the final decision regarding the most suitable publication outlet for each accepted paper. Papers meeting the required standards and scope of SCI, ESCI, Scopus indexed journals will be recommended in those journals. Other accepted papers will be published in conference proceedings, google scholar or non-indexed journals as appropriate. The decision of the conference committee regarding the publication category shall be final and binding.

Acknowledgment:

The Microsoft CMT service was used for managing the peer-reviewing process for this conference. This service was provided for free by Microsoft, and they bore all expenses, including costs for Azure cloud services as well as for software development and support.